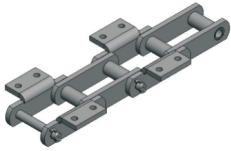


ELOS DE ESTEIRA PROMAC
PAPEL E CELULOSE

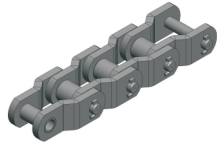


PROMAC

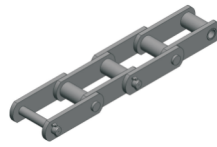
Elos de Esteiras Estampados



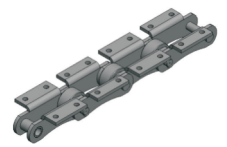
Ref.	Cod.
ES 102 K1	0.11.002.0005



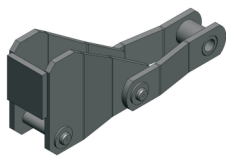
Ref.	Cod.
ES 1245	0.11.009.0008



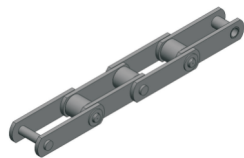
Ref.	Cod.
ES 132	0.11.016.0008



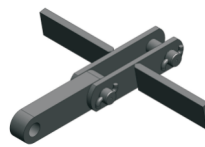
Ref.	Cod.
ES 2178	0.11.025.0002



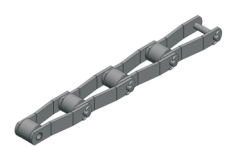
Ref.	Cod.
ES 61011 F1	0.11.096.0040



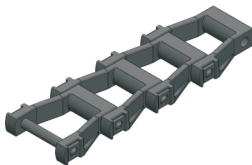
Ref.	Cod.
ES 61062	0.11.096.0093



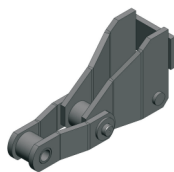
Ref.	Cod.
RD 61070	0.11.096.0108



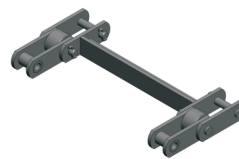
Ref.	Cod.
ES 61080	0.11.096.0123



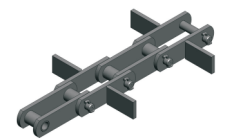
Ref.	Cod.
ES 61011	0.11.096.0151



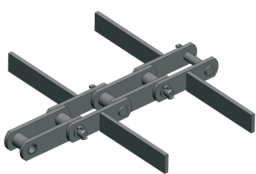
Ref.	Cod.
ES 61345	0.11.096.0408



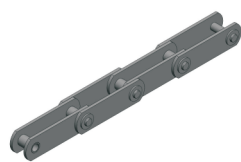
Ref.	Cod.
ES 61600	0.11.096.0665



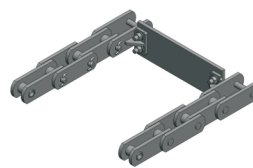
Ref.	Cod.
ES 61400	0.11.096.0463



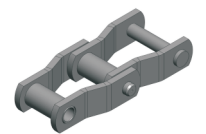
Ref.	Cod.
ES 61010	0.11.096.0674



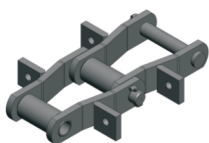
Ref.	Cod.
ES 61616	0.11.096.0681



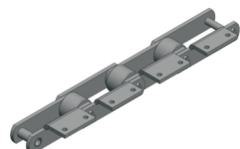
Ref.	Cod.
ES 61667	0.11.096.0732



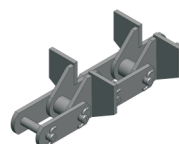
Ref.	Cod.
ES 61683	0.11.096.0748



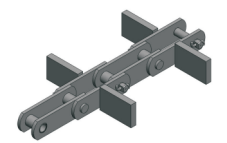
Ref.	Cod.
ES 60956	0.11.096.0026



Ref.	Cod.
ES 61015	0.11.096.0038



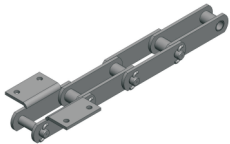
Ref.	Cod.
ES 61188	0.11.096.0244



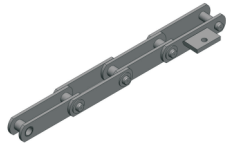
Ref.	Cod.
ES 61208	0.11.096.0267

Elos de Esteiras Estampados e Forjados

Estampados



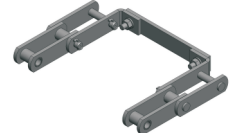
Ref.	Cod.
ES 61946	0.11.096.1011



Ref.	Cod.
ES 62071	0.11.096.1136



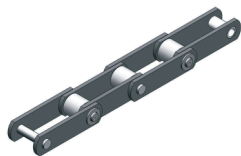
Ref.	Cod.
ES 62199	0.11.016.1264



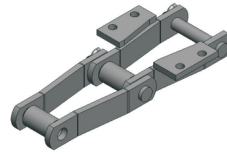
Ref.	Cod.
ES 62103	0.11.096.1168



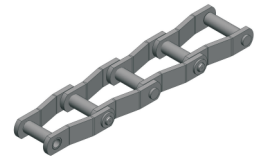
Ref.	Cod.
WD 480	0.11.087



Ref.	Cod.
ES 61062	0.11.096.0093

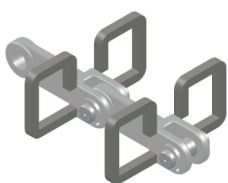


Ref.	Cod.
WH K2	0.11.089.0029

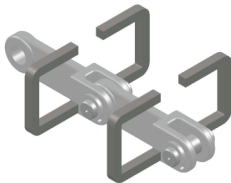


Ref.	Cod.
WHO 132	0.11.089.0030

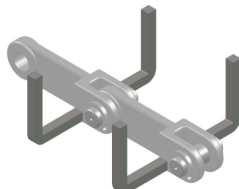
Forjados em Aço Liga de Alta Resistência



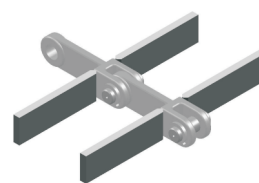
Tipo "OO"



Tipo "O"

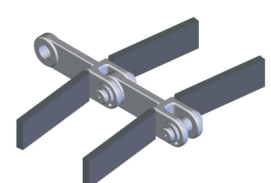


Tipo "U"



reta

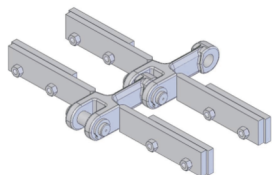
Tipo "A"



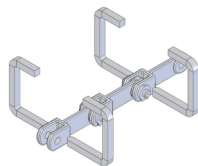
inclinada

Tipo "A"

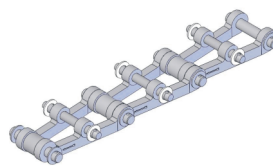
Forjados



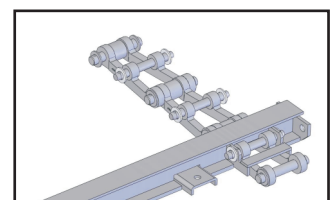
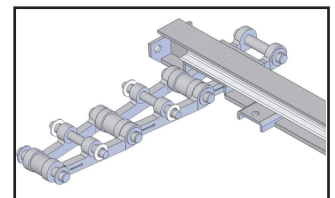
Ref.	Cod.
REA 30	0.11.408.0133



Ref.	Cod.
RE 100	0.11.516.0018



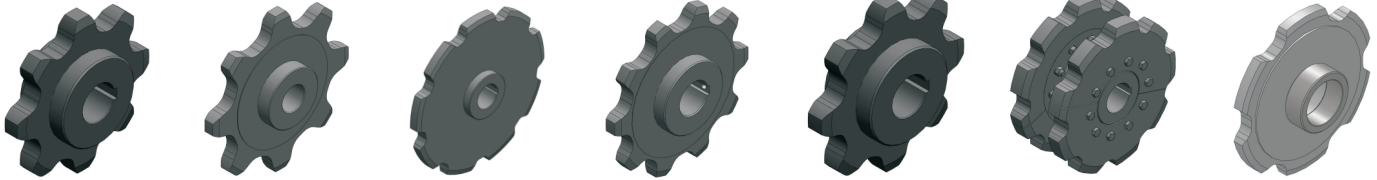
Ref.	Cod.
OFF SET	2.15.002.0070



Componentes

Rodas Dentadas

Inteiriças



0.40.901.0181

0.40.901.0322

0.40.901.0664

0.40.901.0957

0.40.901.1050

0.40.901.1146

0.40.901.1190

Segmentadas



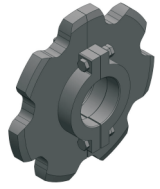
0.40.902.0230



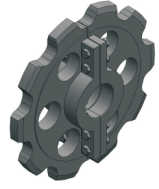
0.40.902.0278



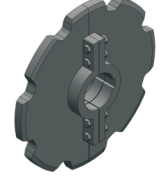
0.40.902.0279



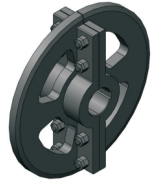
0.40.902.0333



0.40.902.0413



0.40.902.0432

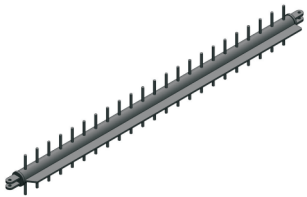


0.40.902.0434

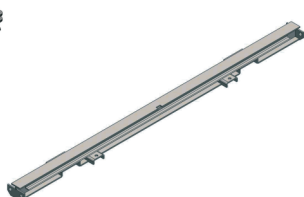
Bipartidas

Outros Componentes

Taliscas



0.40.106



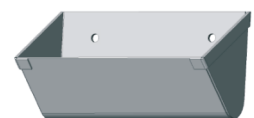
0.43.003

Eixos



0.45.901

Canecas



2.48.001

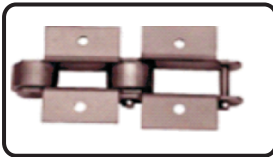
Alguns Clientes PROMAC

- AES Tietê
- Anglo American
- Arcelor Mittal
- Belgo
- Belocal
- Berneck
- Bunge
- Cenibra
- Cimpor
- CPFL
- CSN
- ETH Bioenergia
- Fibria
- Fosfertil
- Gerdau
- GM
- Grupo Orsa
- Holcim
- International Paper
- Jari
- Mannesmann
- Melhoramentos Papéis
- Odebrecht
- Pirelli
- Sandvik
- Suzano
- Vale
- Villares Metals
- Votorantim Cimentos
- Votorantim Siderurgia
- Usiminas
- Usina São Domingos

Completa Gama de Fornecimento em Elos de Esteira e Peças de Reposição

Tipos de Elos de Esteira

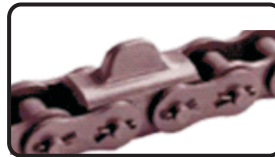
Transportadoras de rolo



Arrastadoras com elos soldados



De transmissão



RE30/REA30



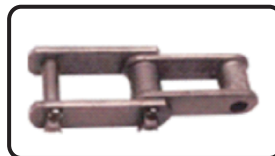
De transmissão pesada



Arrastadoras



Combinadas



Estampadas



Dupla flexão



Forjadas



Fundidas



Tipo Gall



Outros tipos:

Pino Oco

De engenharia (conforme especificação do cliente)

Peças de Reposição

- *Acionamentos*
- *Arrastadores*
- *Canecas*
- *Chapas de Desgastes*
- *Correias*
- *Curvas*
- *Eixos (acionamento/retorno)*
- *Elos de Esteira*
- *Esticadores*
- *Estruturas e Coberturas*
- *Mancais*
- *Raspadores*
- *Rodas Dentadas e Lisas*
- *Roletes*
- *Suportes de Roletes*
- *Taliscas*
- *Tambores (acionamento/retorno);*
- *Tremonhas*
- *Trolleys*



PROMAC

Av. Promac, 111 • Jd. São Francisco
Sumaré/SP • CEP 13181-040
Tel.: (19) 3838-8400 • Fax: (19) 3838-8473
comercial@promacbrasil.com.br
promac@promacbrasil.com.br
www.promacbrasil.com.br